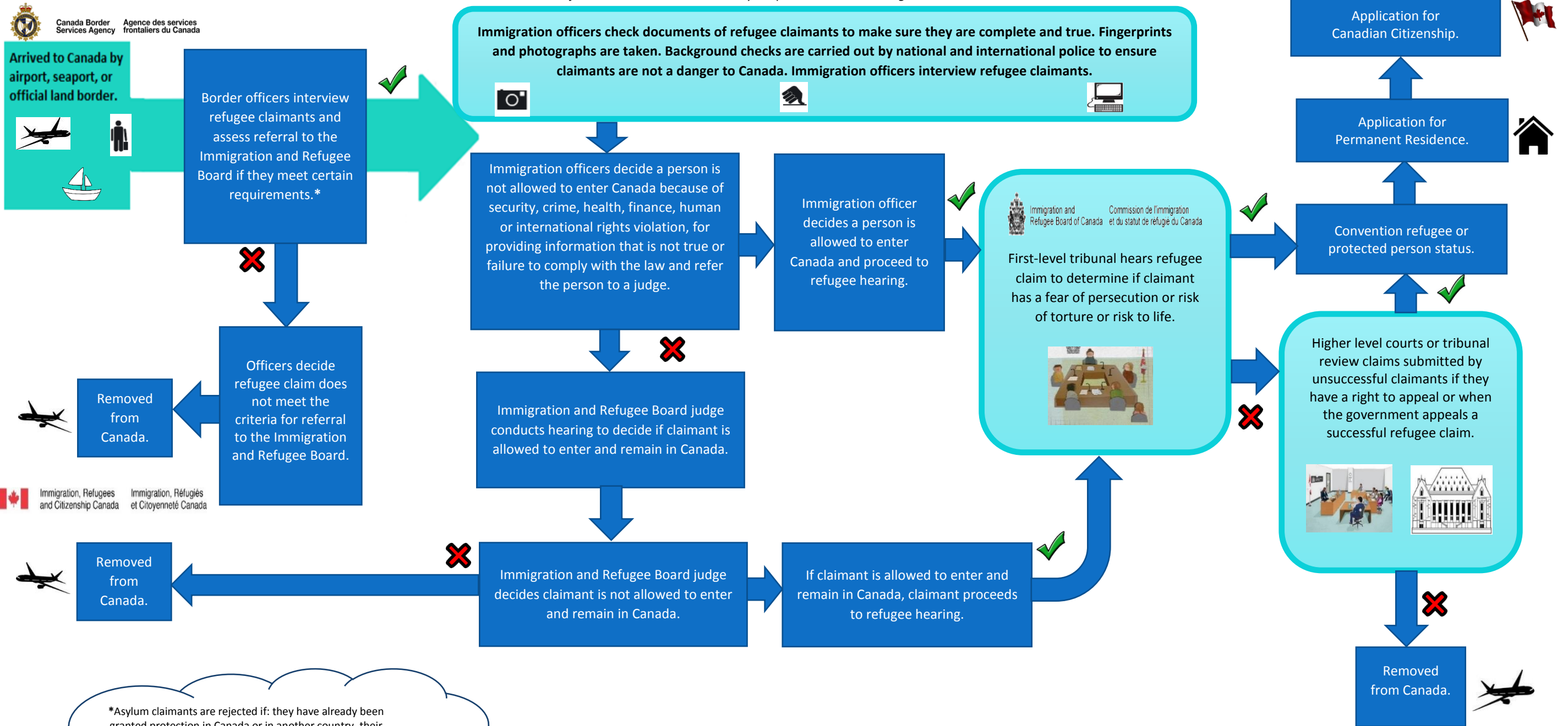


Refugee Claim Process (Regular Entry by Land, Sea, Air)

For more information about the Canadian asylum process visit: www.cic.gc.ca

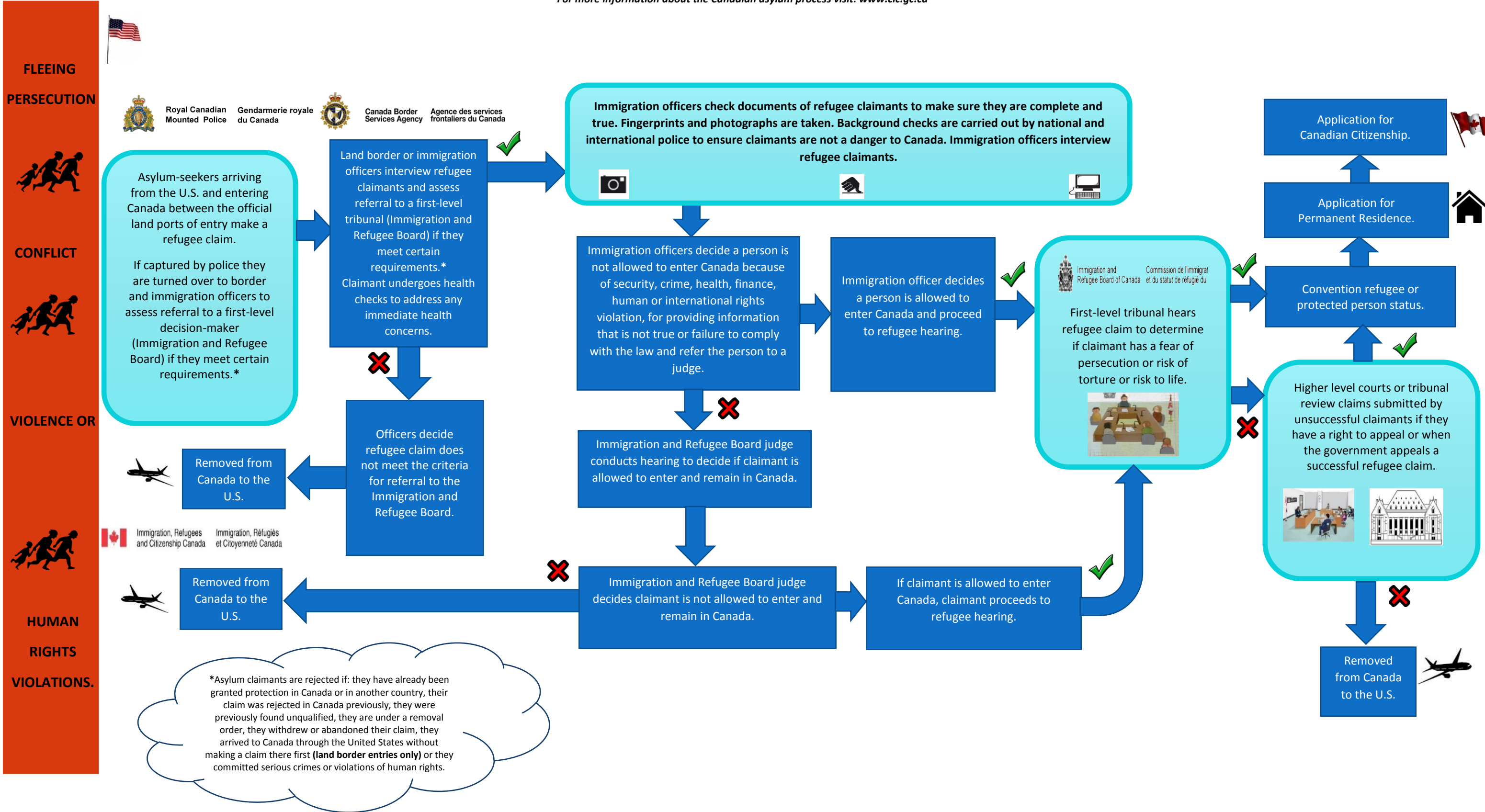


*Asylum claimants are rejected if: they have already been granted protection in Canada or in another country, their claim was rejected in Canada previously, they were previously found unqualified, they are under a removal order, they withdrew or abandoned their claim, they arrived to Canada through the United States without making a claim there first (**land border entries only**) or they committed serious crimes or violations of human rights.

FLEEING PERSECUTION
CONFLICT
VIOLENCE OR
HUMAN RIGHTS VIOLATIONS.

Refugee Claim Process (Irregular Entry by Land from the US)

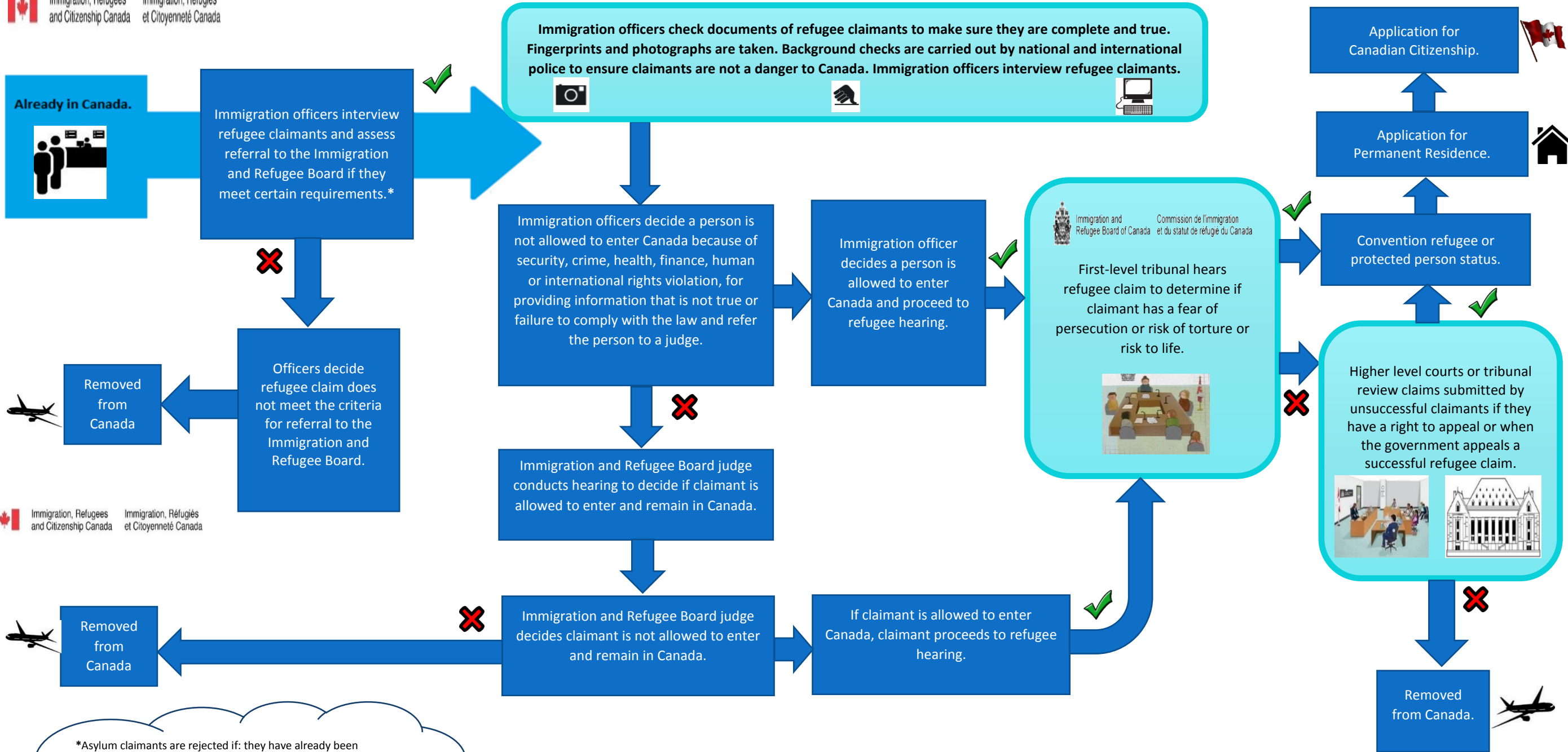
For more information about the Canadian asylum process visit: www.cic.gc.ca



Refugee Claim Process (Made within Canada)

For more information about the Canadian asylum process visit: www.cic.gc.ca

Immigration, Refugees and Citizenship Canada / Immigration, Réfugiés et Citoyenneté Canada



*Asylum claimants are rejected if: they have already been granted protection in Canada or in another country, their claim was rejected in Canada previously, they were previously found unqualified, they are under a removal order, they withdrew or abandoned their claim, they arrived to Canada through the United States without making a claim there first (**land border entries only**) or they committed serious crimes or violations of human rights.

FLEEING PERSECUTION
CONFLICT
VIOLENCE OR
HUMAN RIGHTS VIOLATIONS.