



Statistical Summary and Client Demographics in the West Downtown Toronto Area

**Presented by:
YMCA of Greater Toronto
Language Assessment and Referral Centre**

**West Downtown Toronto Local Immigration Partnership
“Language Service for Newcomers” Forum & Workshop**

January 31, 2012

Chestnut Conference Centre

89 Chestnut Street

Toronto, Ontario

Overview

- Role and purpose of Language Assessment Centre
- Client demographics for Toronto
- Requested client demographics and statistics for West Downtown area
- Highlights of changes in the past 3 years

Role of the Assessment Centre

Since 1992, mandated by Citizenship and Immigration Canada (CIC) to provide:

- 1) Eligibility screening (proof of immigration status)
- 2) English language assessment for LINC and higher-level language training
- 3) Referral to CIC-funded English language programs

As of September 2011, French language assessments for CIC-funded *CLIC (Cours de Langue pour les Immigrants au Canada)* program.

Language Assessment Locations and Hours of Operation

4 locations in the City of Toronto, open Mon-Fri 8:30 a.m. – 4:30 p.m. in addition to extended hours.

- 1) Downtown: 20 Grosvenor Street, 3rd floor (Yonge and College)
Extended hours: Wednesdays 8:30 a.m.-8:00 p.m.
Sat 10:00 a.m.-2:00 p.m.
- 2) North York: 4580 Dufferin Street, 2nd Floor (Dufferin and Finch)
Extended hours: Mon 8:30 a.m.- 8:00 p.m
- 3) Scarborough: 10 Milner Business Crt, suite 600 (Markham & 401)
Extended hours: Tue 8:30 a.m.- 7 p.m.
- 4) Etobicoke: 1530 Albion Road, unit 83 (Albion and Kipling)

Assessment Tools

5 standardized and validated assessment tools administered by certified assessors:

- 1) Canadian Language Benchmarks Assessment (CLBA)
- 2) Canadian Language Benchmarks Placement Test (CLBPT)
- 3) Enhanced Language Training Placement Assessment (ELTPA)
- 4) Canadian Language Benchmarks Literacy Assessment (CLBLA)
- 5) *Batterie de tests de classement aux Niveaux de compétence linguistique canadiens (BTC-NCLC)*

Referrals

1) LINC/CLIC

- Direct enrolment into a LINC class/waitlist

2) Higher-level language training (HLLT)

- Refer back to HLLT service provider
- Enrolment into HLLT class upon request to assessor on HARTs

Referral Process

- Client-driven
- Based on matching identified needs with the most appropriate program

Assessment Summary for Toronto

Jan. 1, 2009 – Dec. 31, 2011



City of Toronto: 59,515 assessments

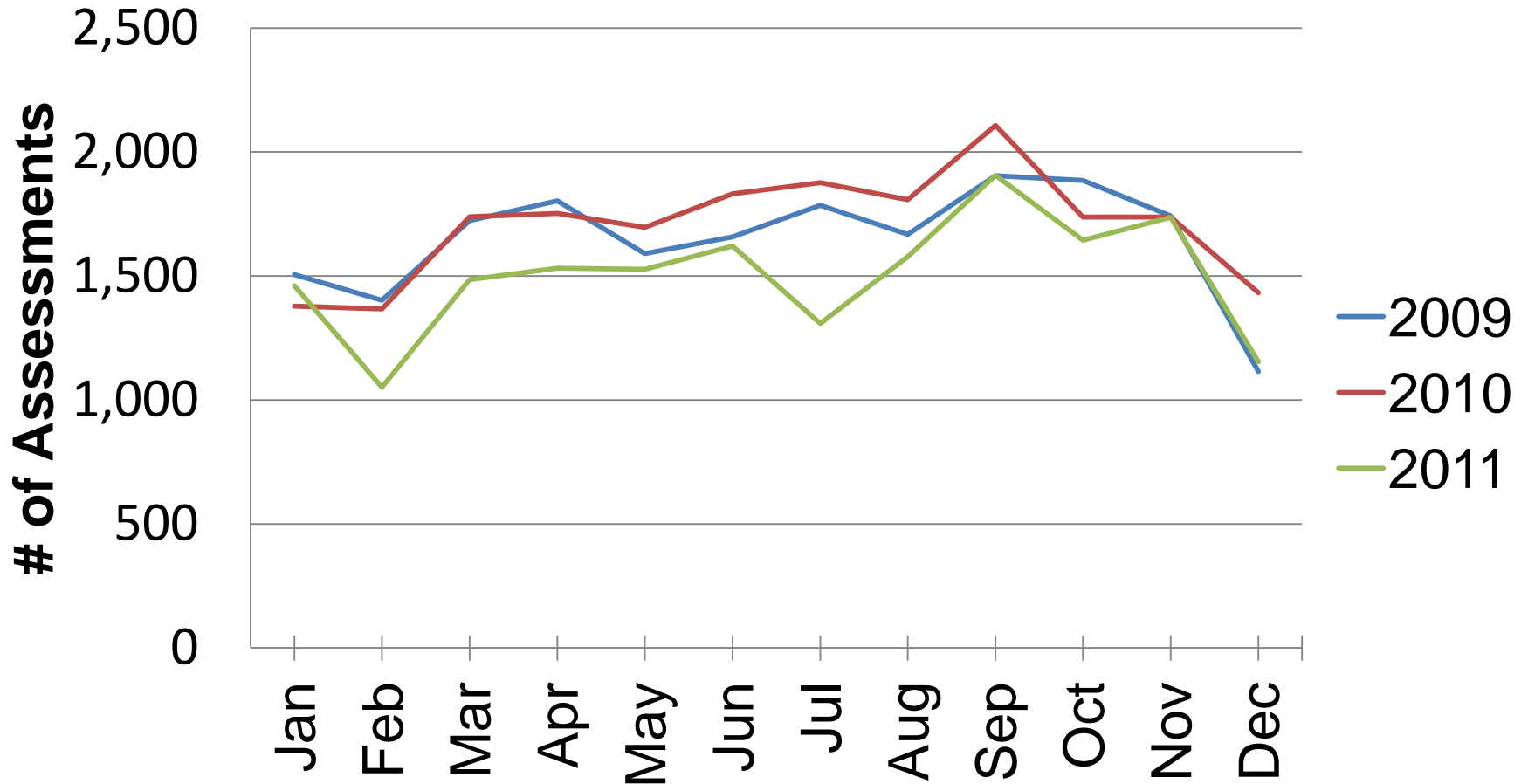
Annual average: 19,838

Monthly Average: 1,653

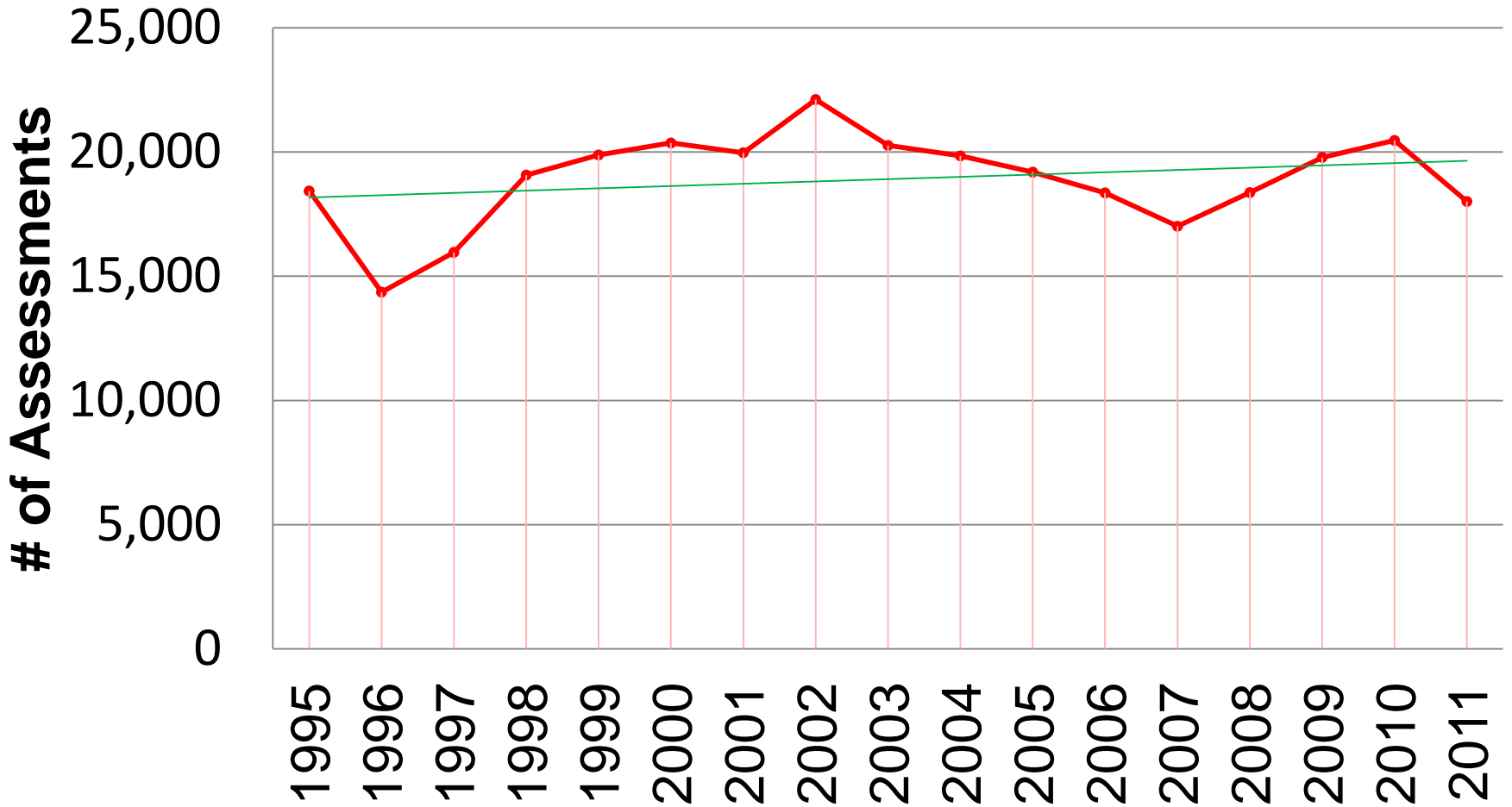
Highest month: September 2010 (2,108)

Lowest month: February 2011: 1,052

of Assessments by Month: 2009-2011



Number of Assessments by Year: 1995-2011



Statistics for the West Downtown Toronto Area

Geographical boundary: St. Clair Avenue to
Lake Ontario, High Park to Yonge Street

Overview of Requested Statistics for West Downtown

- Assessment volume
- Assessments by LINC level, requested class time
- Proportion of childminding requests
- Client demographics and changes
- Breakdown of clients by FSA
- Residential density map of clients

Number of Assessments for West Downtown

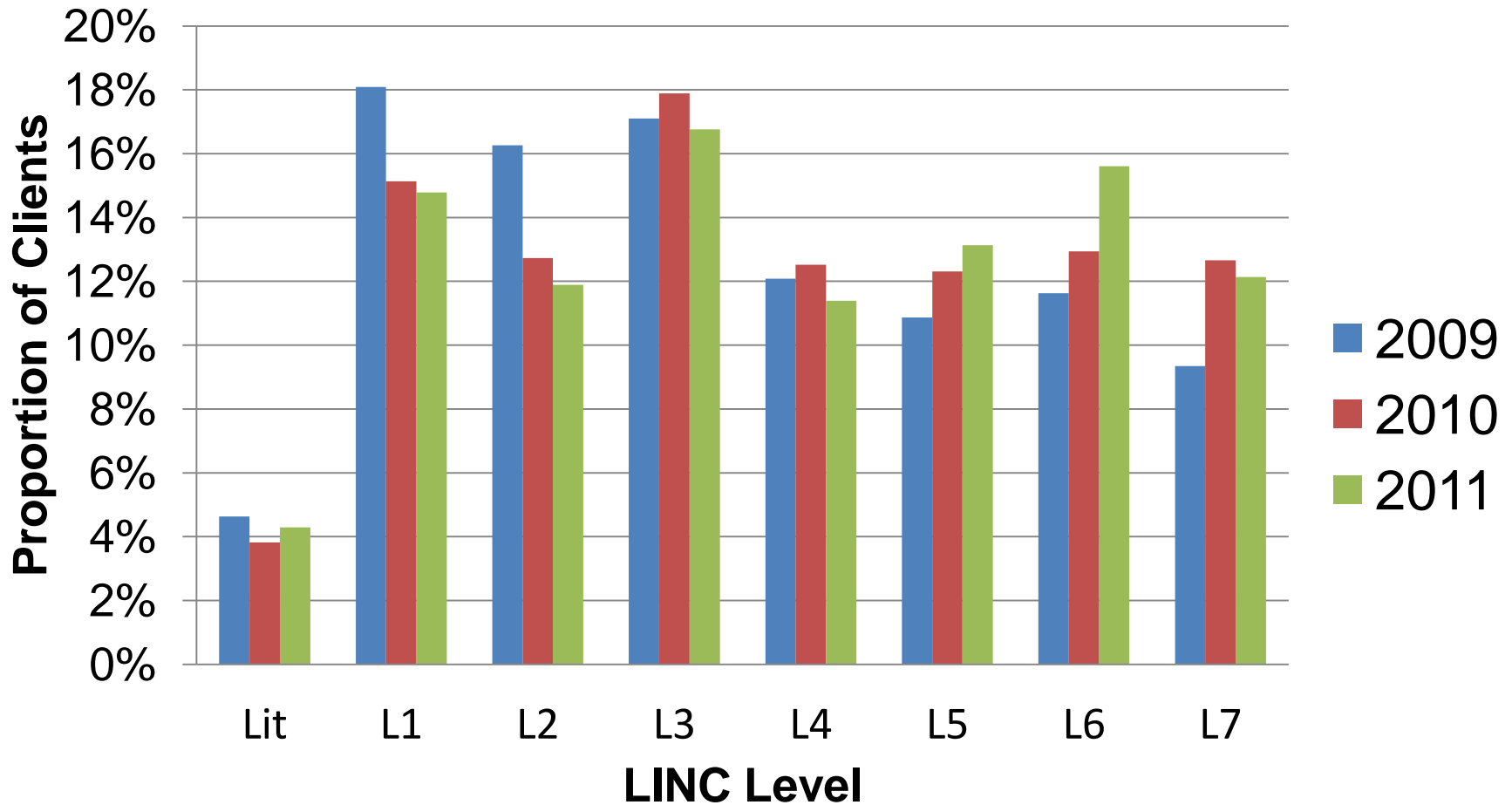
Jan. 1, 2009-Dec. 31, 2011:

- Total for 3 years: 3,941 assessments
- **7%** of total assessments for City of Toronto
- Ave. # of assessments per year from West Downtown: 1,314
- Average per month: 110 assessments
- 84% of assessed clients from 2009-2011 were enrolled into CIC-funded language training

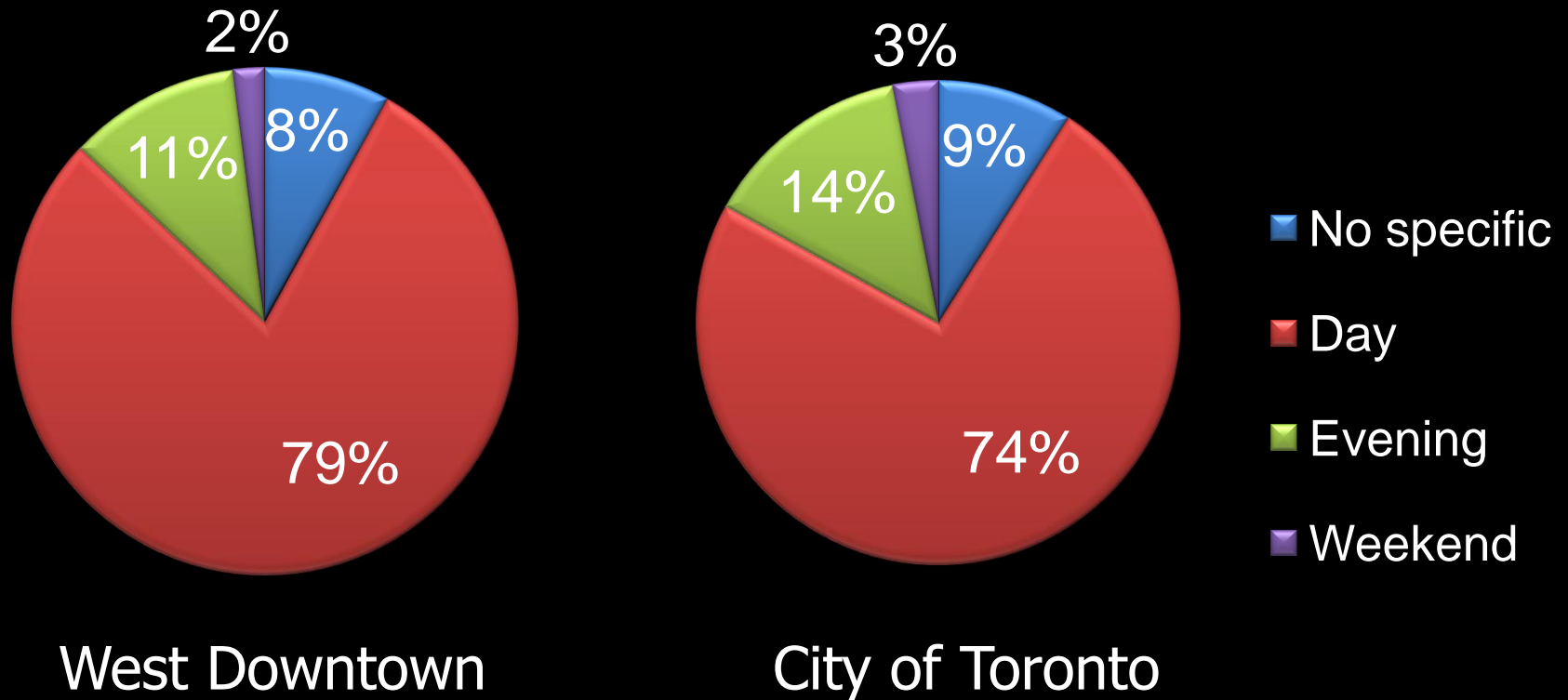
Breakdown of Clients by LINC Level: 2009-2011

| LINC Level | Toronto | West Downtown |
|-------------------|----------------|--------------------------|
| Literacy | 5% | 4% |
| Level 1 | 14% | 16% |
| Level 2 | 14% | 14% |
| Level 3 | 19% | 17% |
| Level 4 | 13% | 12% |
| Level 5 | 12% | 12% |
| Level 6 | 12% | 13% |
| Level 7 | 10% | 11% |

West Downtown Residents by LINC Level: 2009-11



Comparison of Requested Class Time: 2009-2011



Breakdown of Daytime Class Requests by LINC Level

| | Toronto | West Downtown |
|----------|---------|---------------|
| Literacy | 7% | 6% |
| Level 1 | 18% | 21% |
| Level 2 | 18% | 16% |
| Level 3 | 23% | 22% |
| Level 4 | 15% | 13% |
| Level 5 | 12% | 12% |
| Level 6 | 6% | 8% |
| Level 7 | 2% | 2% |

Breakdown of Evening Class Requests by LINC Level

| | Toronto | West Downtown |
|----------|----------------|----------------------|
| Literacy | 3% | 0% |
| Level 1 | 11% | 3% |
| Level 2 | 14% | 8% |
| Level 3 | 20% | 19% |
| Level 4 | 17% | 17% |
| Level 5 | 17% | 19% |
| Level 6 | 14% | 22% |
| Level 7 | 5% | 12% |

Breakdown of Weekend Class Requests by LINC Level

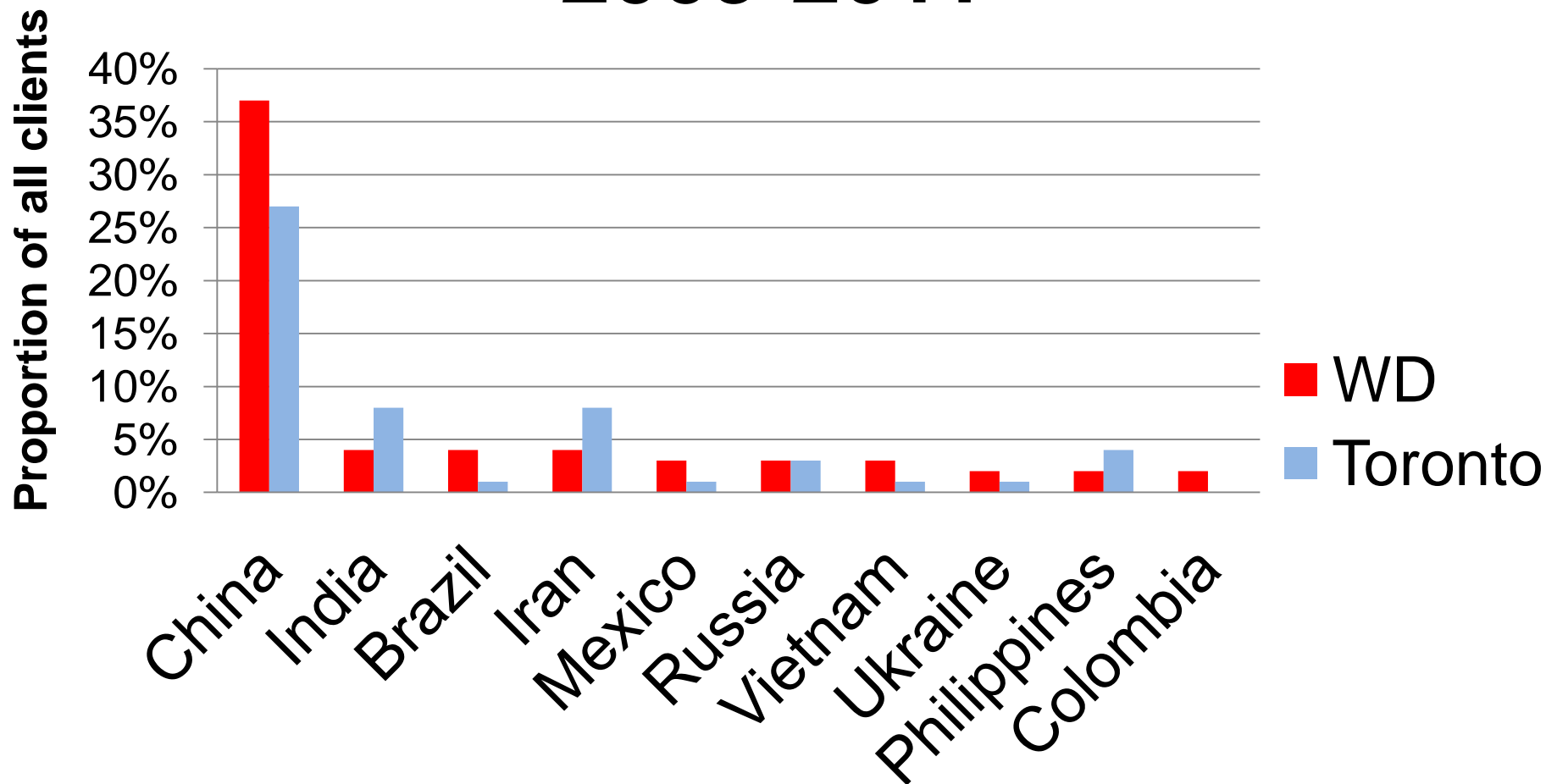
| | Toronto | West Downtown |
|----------|----------------|----------------------|
| Literacy | 11% | 2% |
| Level 1 | 13% | 25% |
| Level 2 | 16% | 30% |
| Level 3 | 19% | 16% |
| Level 4 | 16% | 7% |
| Level 5 | 14% | 5% |
| Level 6 | 9% | 14% |
| Level 7 | 3% | 2% |

Clients' Childminding Requirements

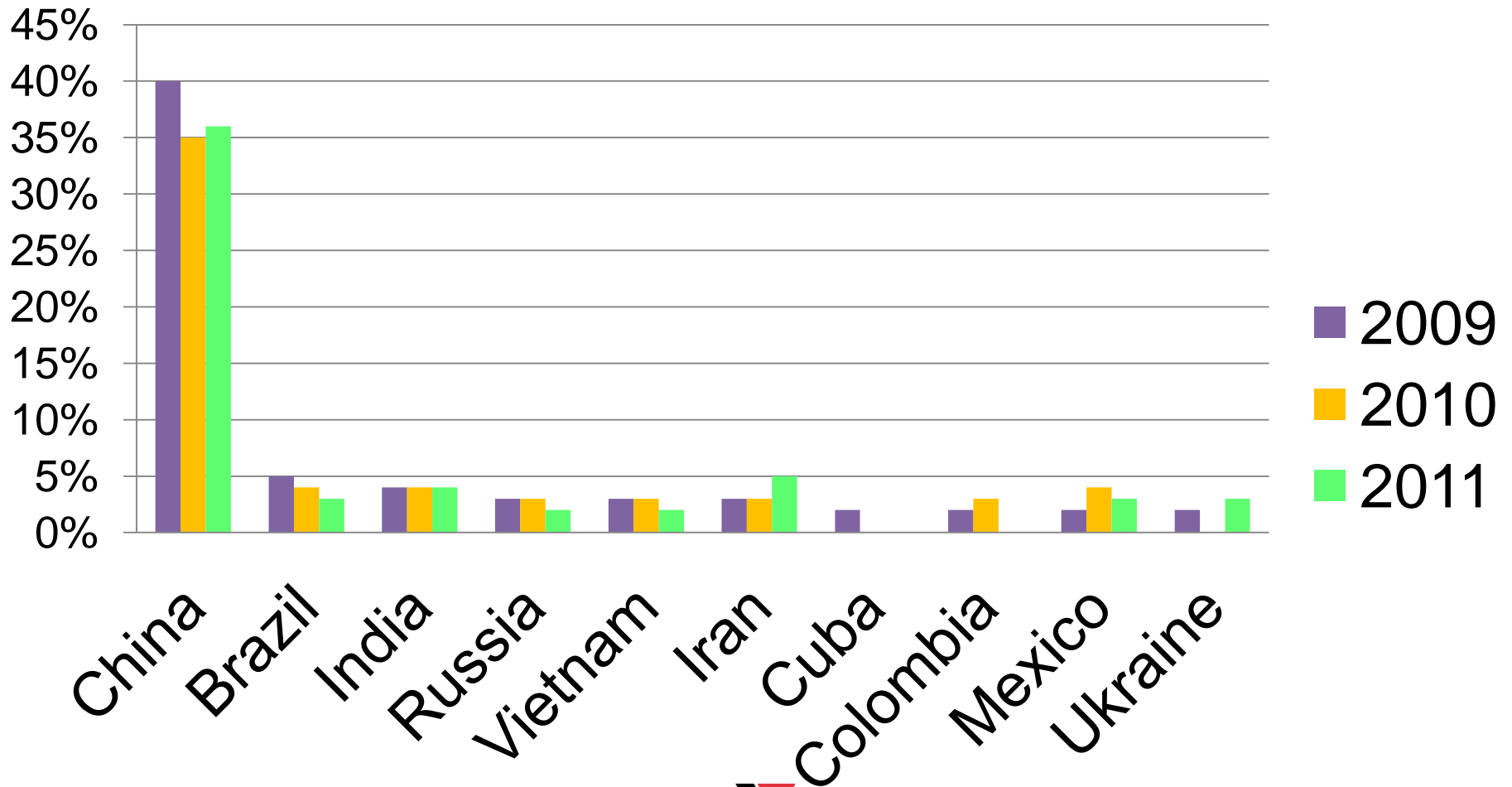
| | Toronto | WD |
|---------|----------------|-----------|
| No CM | 90% | 92% |
| Need CM | 10% | 8% |

| West Downtown | | | |
|----------------------|-------------|-------------|-------------|
| | 2009 | 2010 | 2011 |
| No CM | 92% | 93% | 90% |
| Need CM | 8% | 7% | 10% |

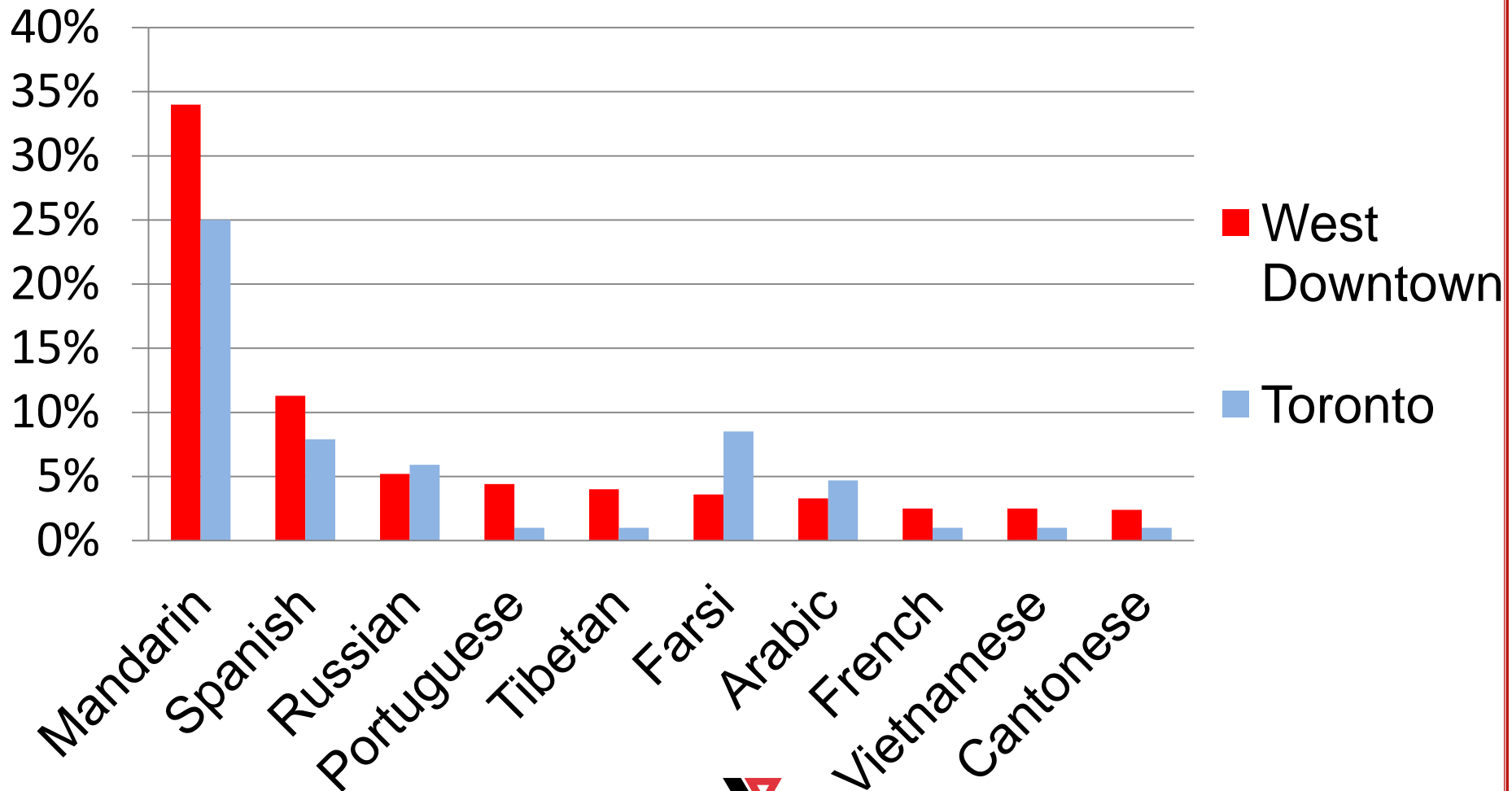
Top 10 Countries of Origin: 2009-2011



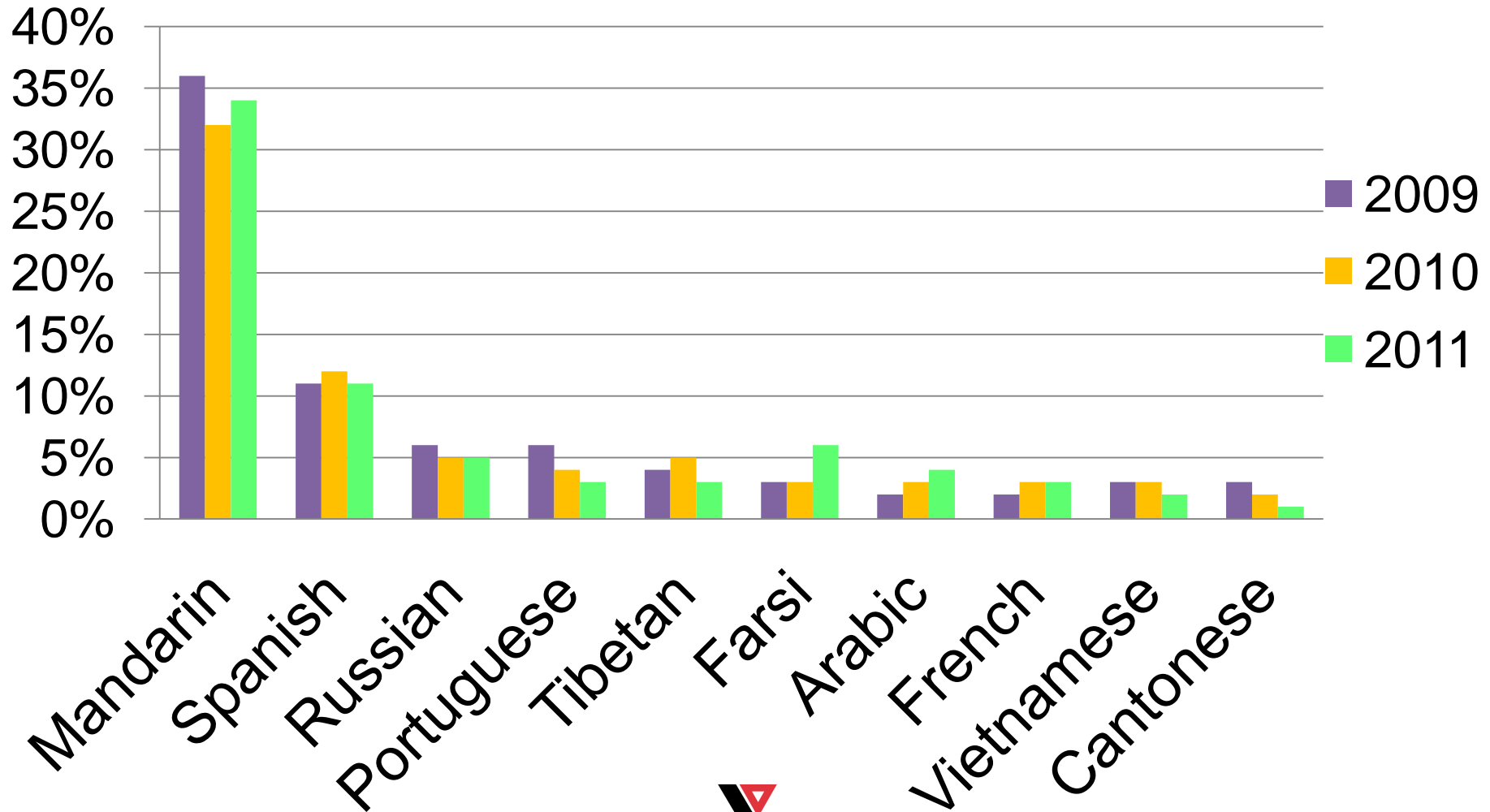
3-Year Comparison of Top 10 Countries of Origin for WD



Top 10 First Languages: 2009-2011



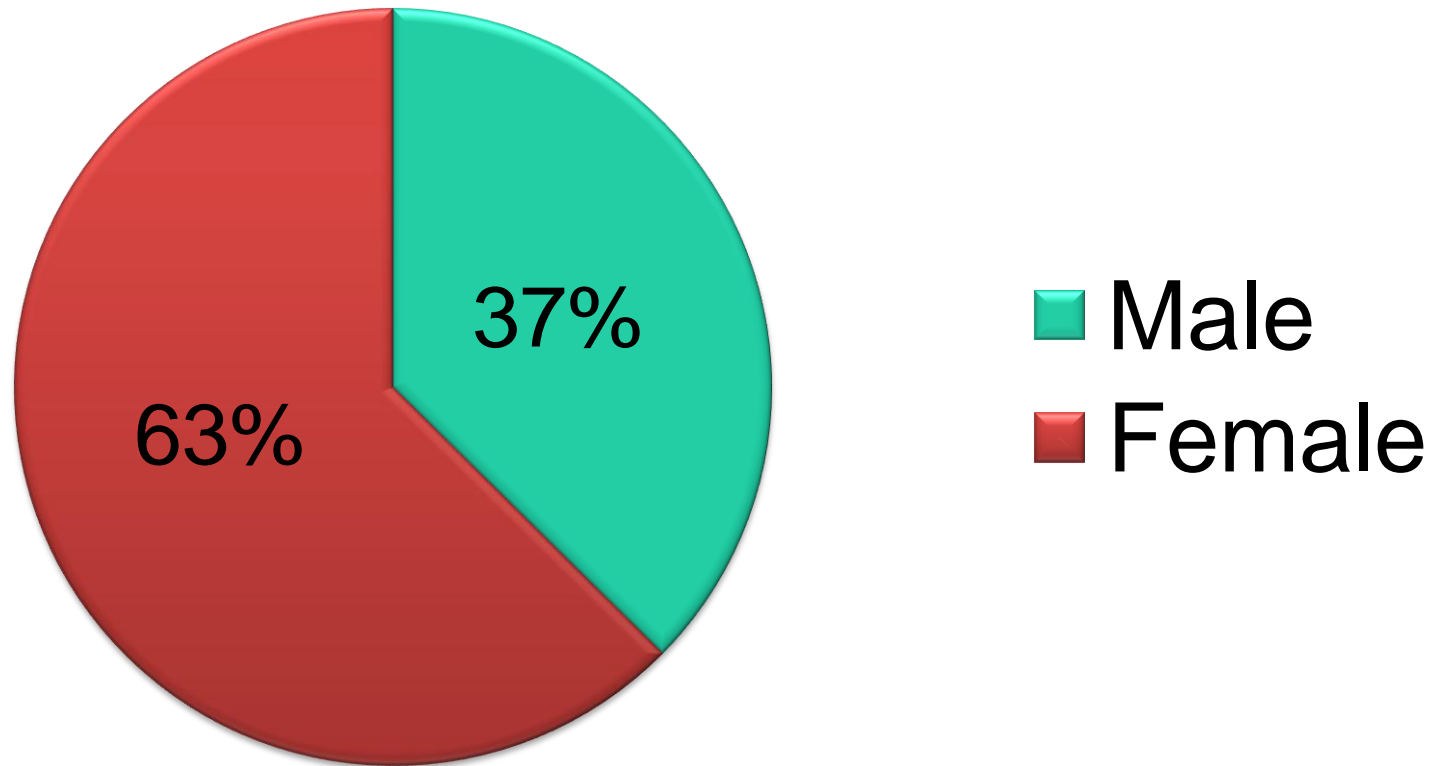
3-Year Comparison of Top 10 Client First Languages for WD



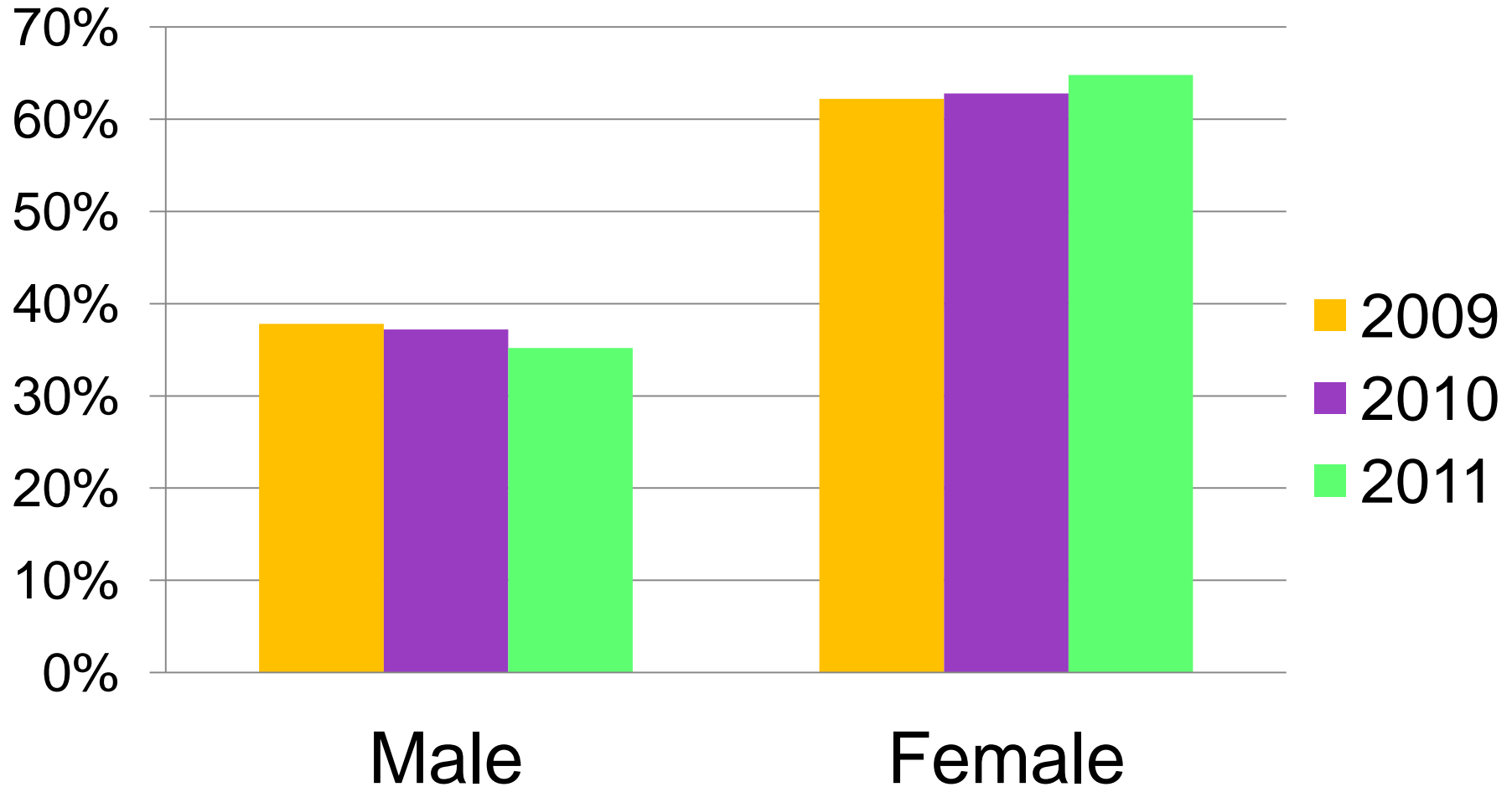
Age Range Comparison: 2009-11

| Age Range | Toronto | WD |
|------------------|----------------|-----------|
| 18-20 | 2% | 2% |
| 20 - 24 | 10% | 9% |
| 25 - 29 | 16% | 18% |
| 30 - 34 | 18% | 19% |
| 35 - 39 | 18% | 17% |
| 40 - 44 | 14% | 11% |
| 45 - 49 | 10% | 11% |
| 50 - 54 | 6% | 6% |
| 55 - 59 | 3% | 3% |
| 60 - 64 | 2% | 2% |
| 65 - 69 | 1% | 2% |
| 70 - 74 | 1% | 1% |
| 75 – 79 and 80+ | 0% | 0% |

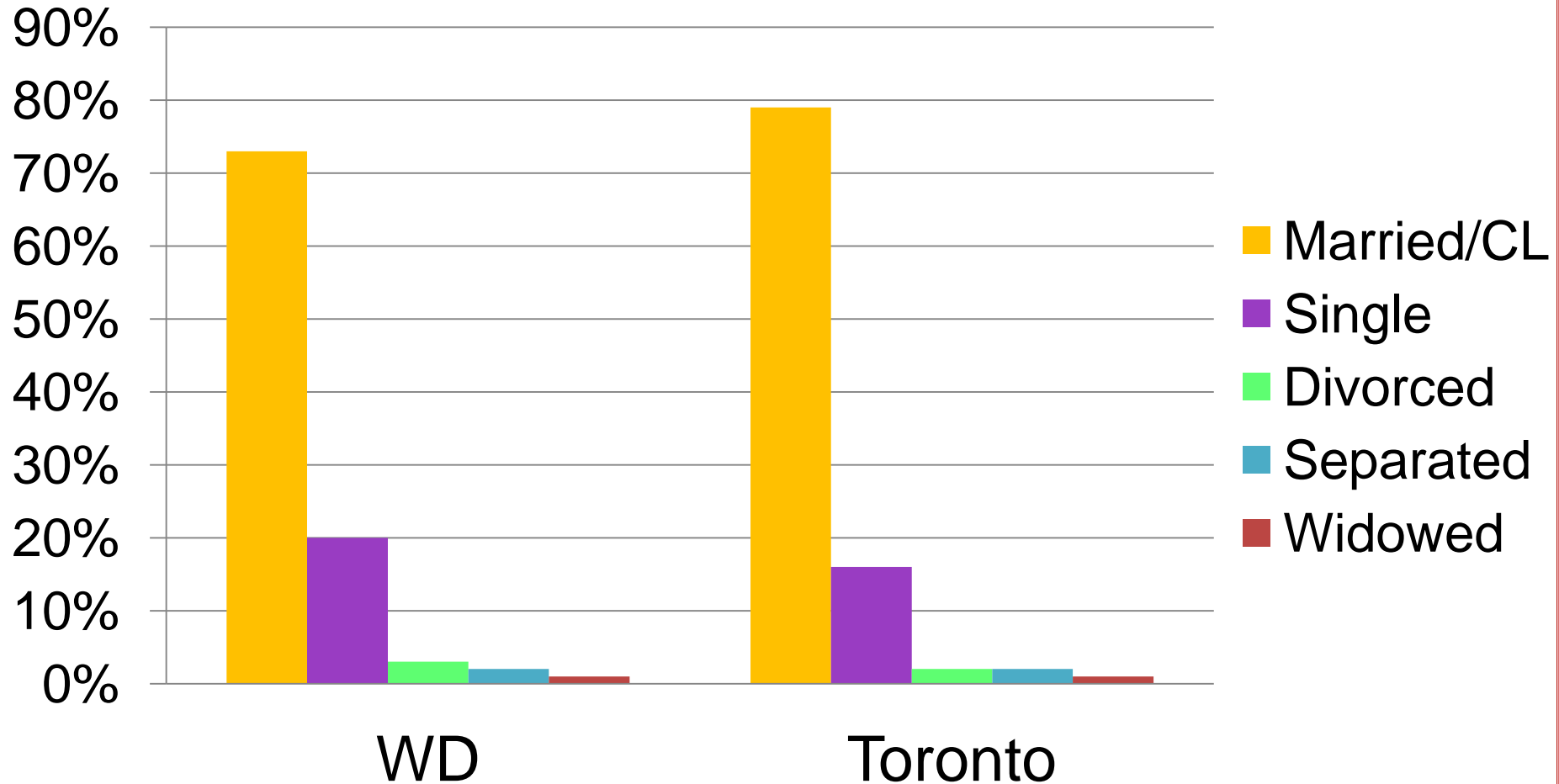
Gender Breakdown for West Downtown: 2009-2011



Three-Year Comparison of WD Residents by Gender



Comparison of Marital Status: West Downtown vs. Toronto



Clients' Education Levels

| | Toronto | WD |
|----------------|----------------|-----------|
| Post Secondary | 51% | 47% |
| Secondary | 25% | 26% |
| Post Graduate | 16% | 16% |
| Elementary | 8% | 11% |

| West Downtown | | | |
|----------------------|-------------|-------------|-------------|
| | 2009 | 2010 | 2011 |
| Post Secondary | 47% | 47% | 46% |
| Secondary | 28% | 26% | 25% |
| Post Graduate | 13% | 17% | 19% |
| Elementary | 12% | 10% | 10% |

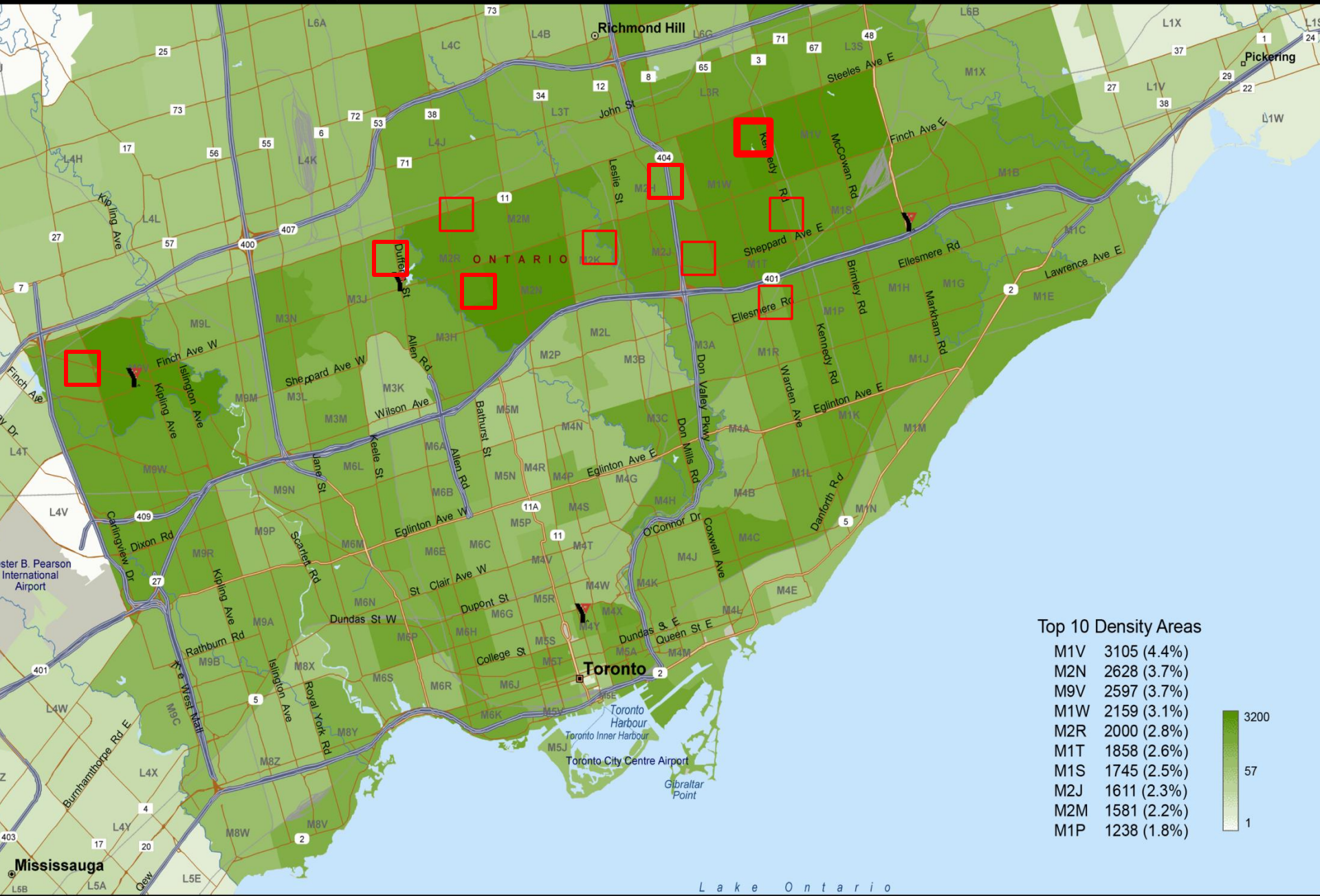
Clients' Source of Income

| Income Source | WD | Toronto |
|-----------------------------------|-----------|----------------|
| Personal Savings | 33% | 34% |
| No income/ supported by family | 30% | 33% |
| Employed | 14% | 14% |
| Social Assistance | 10% | 8% |
| RAP | 2% | 2% |
| EI | 2% | 2% |

Proportion of Assessments by FSA: 2009-11

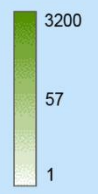
| FSA | % Clients |
|------------|------------------|
| M5G | 19% |
| M5B | 16% |
| M6C | 15% |
| M5P | 13% |
| M5H | 9% |
| M5J | 4% |

Clients Assessed at YMCA Language Assessment & Referral Centers



Top 10 Density Areas

| | |
|-----|-------------|
| M1V | 3105 (4.4%) |
| M2N | 2628 (3.7%) |
| M9V | 2597 (3.7%) |
| M1W | 2159 (3.1%) |
| M2R | 2000 (2.8%) |
| M1T | 1858 (2.6%) |
| M1S | 1745 (2.5%) |
| M2J | 1611 (2.3%) |
| M2M | 1581 (2.2%) |
| M1P | 1238 (1.8%) |



Lake Ontario

Contact Information

Dunja Metikos

Director, Language Assessment &
Referral Centre

YMCA of Greater Toronto

416-928-3362, ext. 22490

dunja.metikos@ymcagta.org

