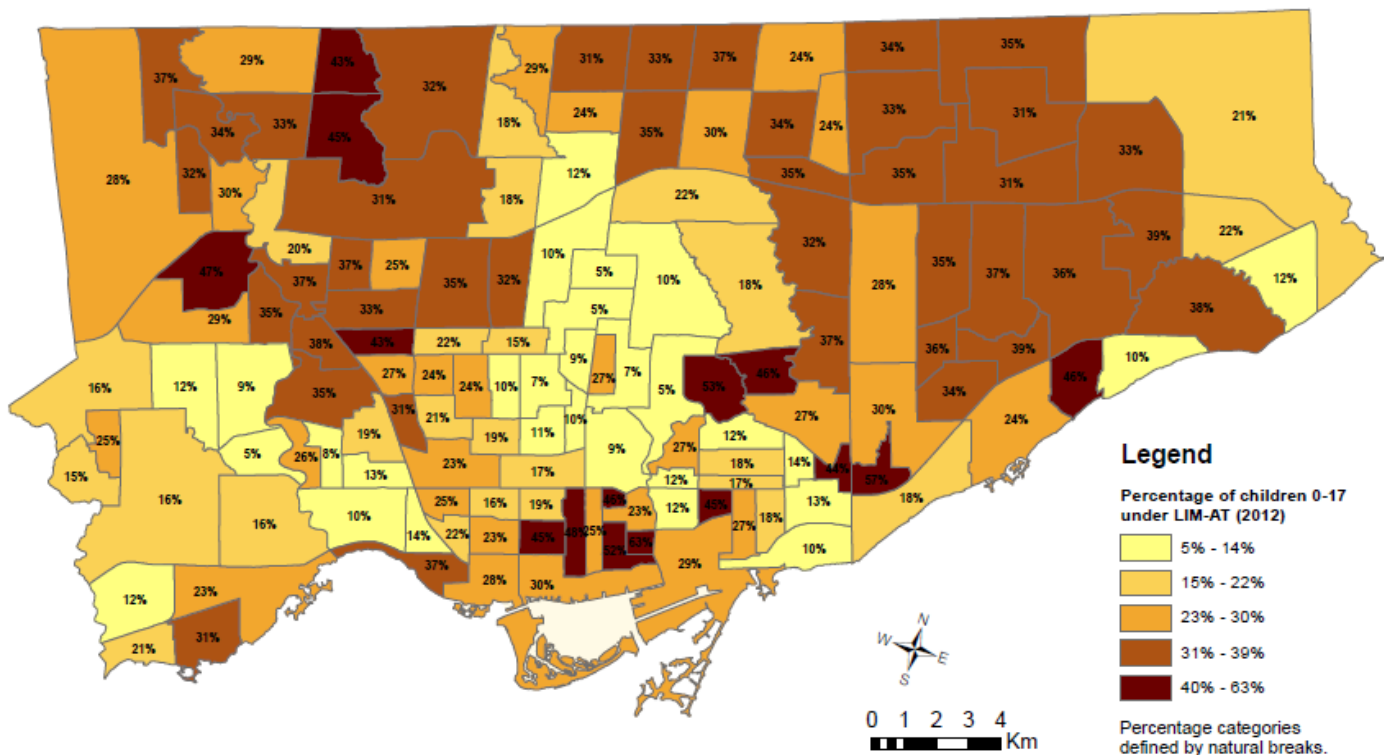


NEW DATA SHOWS EPIDEMIC POVERTY LEVELS IN TORONTO

FOR RELEASE ON AUGUST 27, 2014

Figure 1 Percentage of Children Ages 0-17 under Low-Income Measure After-Tax Living in Each of Toronto's 140 Neighbourhoods



Source: Statistics Canada, 2012 T1FF Family File Table F-18; Community Data Program; City of Toronto; Social Policy Analysis & Research



END CHILD AND FAMILY POVERTY IN CANADA



Prepared jointly by the Alliance for a Poverty-Free Toronto, Children's Aid Society of Toronto, Colour of Poverty – Colour of Change, Ontario Campaign 2000, and Social Planning Toronto. A full report will be released in the fall. Data analysis support from City of Toronto staff is gratefully acknowledged.

New Statistics Canada family data¹ released on July 23 shows:

Striking disparity in neighbourhood low-income rates:

- The percentage of children living in low-income families (measured by after tax Low Income Measure) varies dramatically from 5% in Leaside-Bennington, Lawrence Park, and Kingsway, to 50% or over in Regent Park, Moss Park, Thorncliffe Park and Oakridge

High poverty rates in many of Toronto's 140 neighbourhoods:

- 15 neighbourhoods have child poverty rates of 40% or more, and an additional 40 neighbourhoods have child poverty rates of 30% or more

Toronto poverty rates are the highest in the GTA and among the highest in Canada

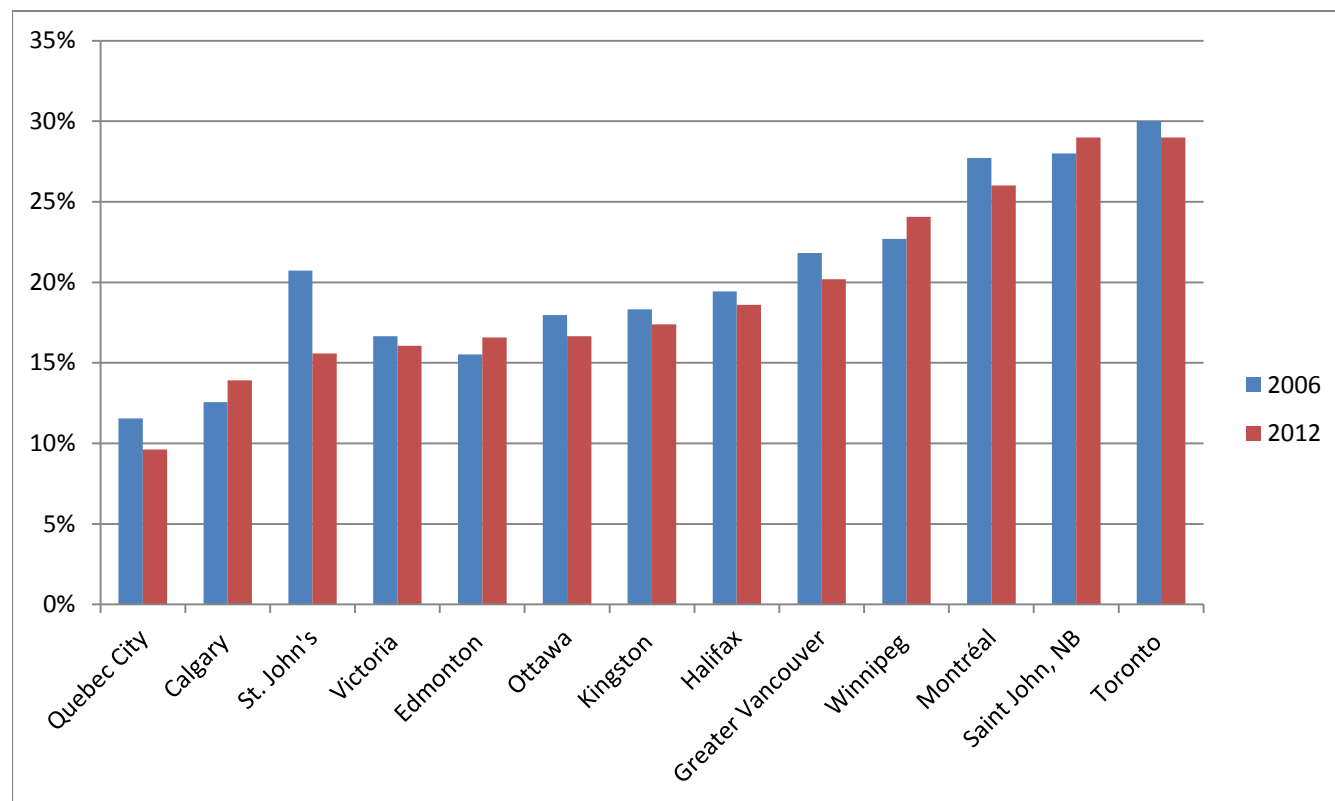
- Child poverty in Toronto is the highest in the Greater Toronto and Hamilton Area and tied with Saint John for the highest among 13 major Canadian cities

Poverty rates are on the increase once again

- Child poverty rates increased between 2010 and 2011, and again in 2012

¹ <http://www5.statcan.gc.ca/olc-cel/olc.action?ObjId=13C0016&ObjType=22&lang=en&limit=0>

Figure 2 Percentage of Children 0-17 Living Below the Low-Income Measure After-Tax in Canada's Major Cities



(City of Toronto, Statistics Canada T1 Family File, 2006 and 2012)

Child Poverty Rates in Toronto (1997-2012)

- 29% of Toronto's 507,810 children ages 0-17 (145,890) live in poverty*
- The percentage of Toronto children living on low-incomes increased from 28% to 32% between 1997 and 2004, then declined slowly until 2010, before rising in 2011 and 2012
- About 10,200 more children were living in low-income families in 2012 compared to 2010

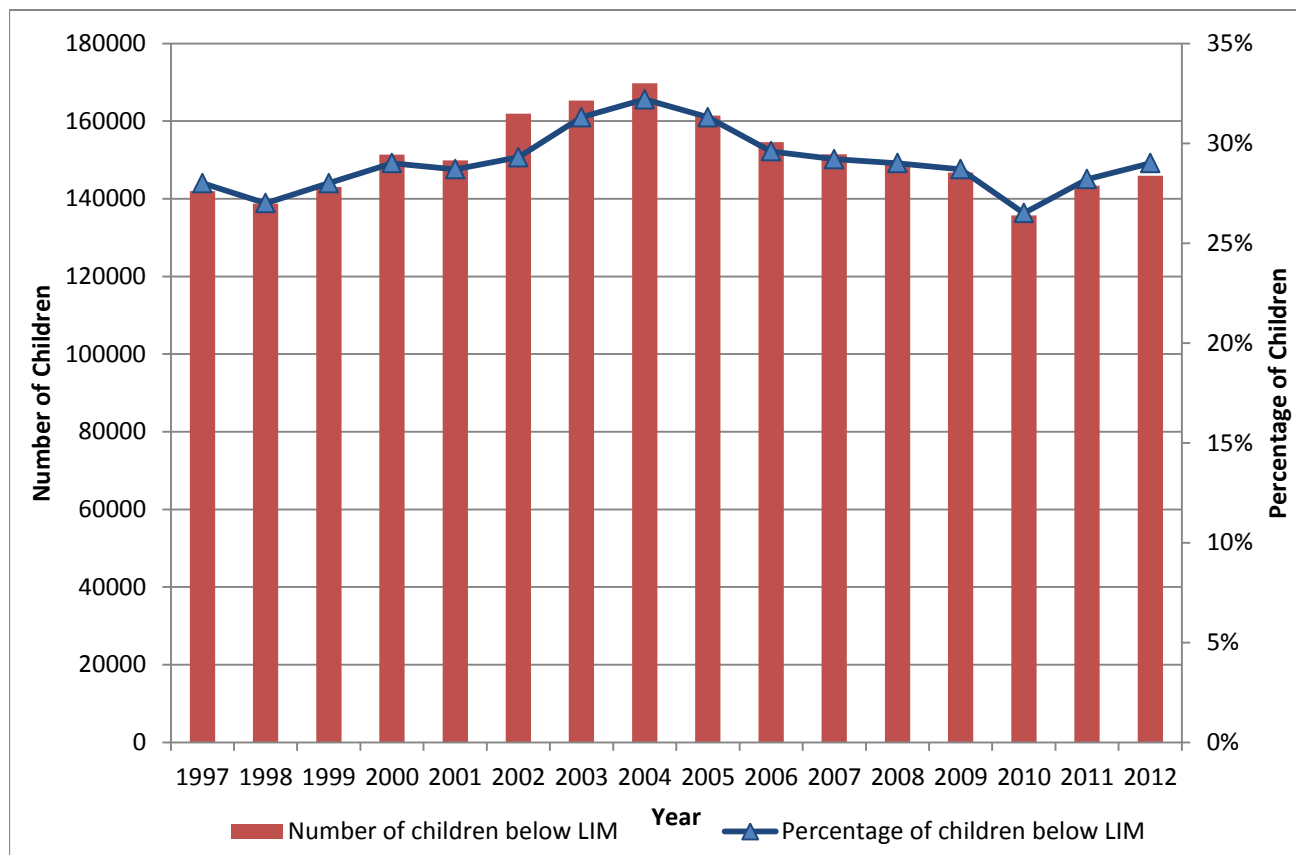
Poverty in the GTA and Canada

- Toronto continues to have the highest child poverty rate in the GTA
- The City of Toronto is tied with Saint John, New Brunswick for the highest child poverty rate of major Canadian urban centres.

*City of Toronto, Statistics Canada T1 Family File, 2012

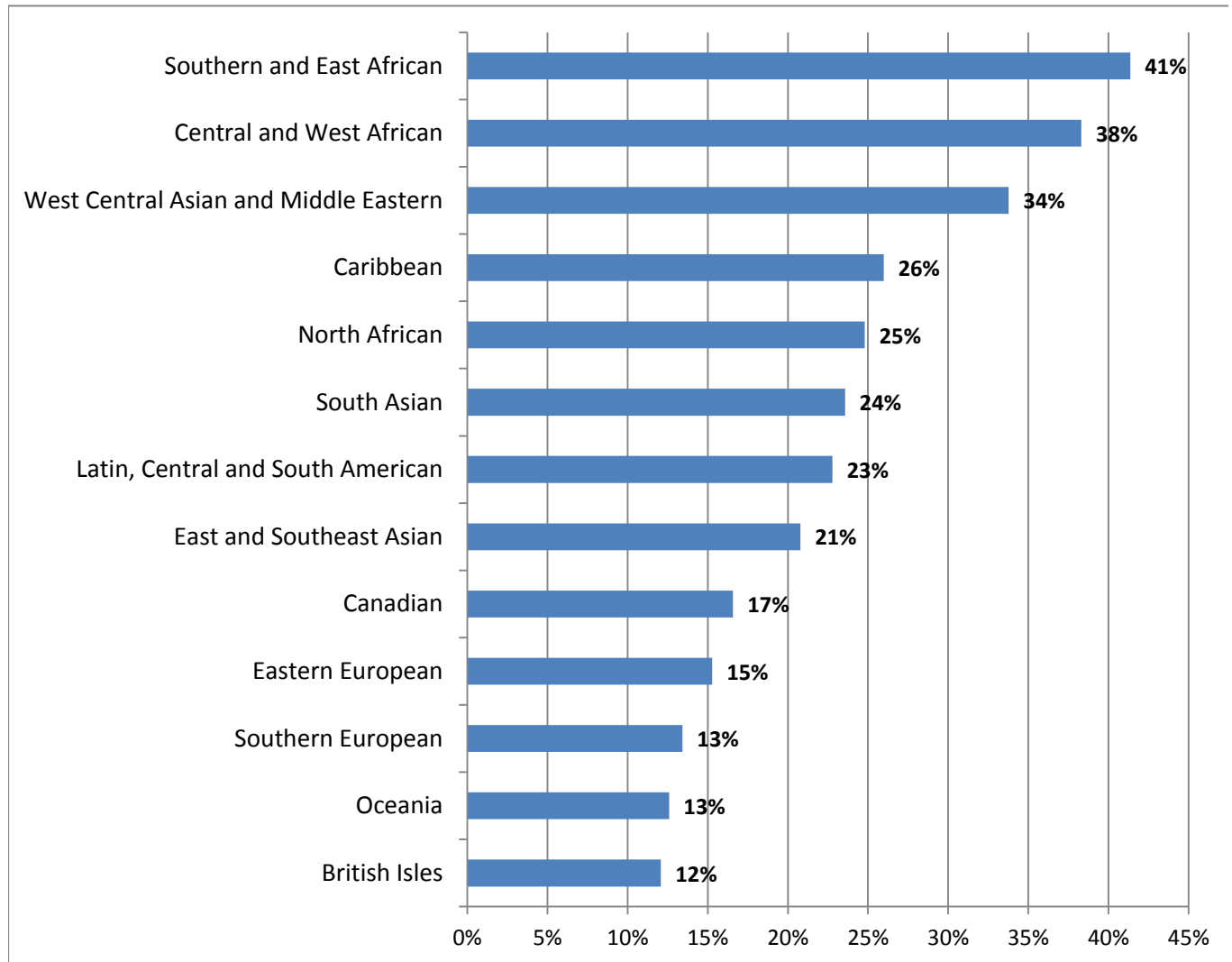


Figure 3 Number and Percentage of Children in Toronto Living Below the Low-Income Measure After-Tax



(City of Toronto, Statistics Canada T1 Family File, 1997-2012)

Figure 4 Percentage of Individuals by Ethnic Origin* Living Below the Low-Income Measure After-Tax in the City of Toronto



City of Toronto, NHS, 2011

*Ethnic origin as defined by Statistics Canada

Poverty is Racialized in Toronto

Toronto residents of *African, Asian, Middle Eastern, Caribbean* and *Latin American* background are *much more likely to be living on low-incomes.*

What is the After-Tax Low Income Measure (LIM-AT)?

The LIM-AT represents households earning less than half the median income in the City. In 2010, the LIM-AT threshold for a *single person* was *\$19,460.*

For a *household with two members* it was *\$27,521* and for a *household with four members* it was *\$38,920.*