

LIP LOCAL IMMIGRATION PARTNERSHIP

T O R O N T O S O U T H

Program Planning Resources

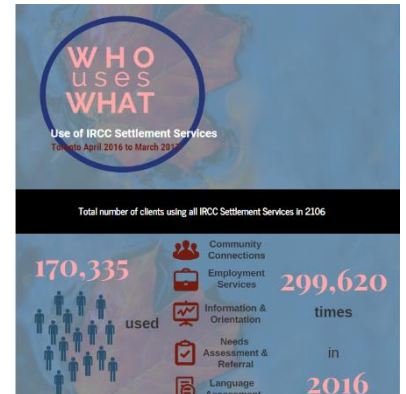
This summer, The Toronto South LIP developed a number of tools to assist organization in program planning.

1. Infographics

A series of infographics illustrating the **Use of Settlement Services** including who is using which services (graphs show service by program and by immigration category). Data from IRCC (special request for Toronto data). The data tables are also posted on the page for your own use and reference.

You can find the series of infographics for both Toronto and Ontario on our website here:

<http://www.torontolip.com/Publications/UseofSettlementServices.aspx>

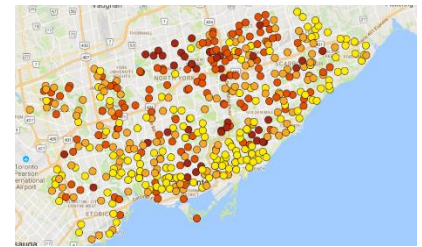


2. Maps

Using TDSB data, we developed two maps (one for Elementary Schools and one for Secondary Schools) which illustrate the **Percentage of Recent Immigrants in TDSB Schools**. Clicking on the school will show you: school name, address, Ward, % of Newcomer Students for each of the past three years. A detailed Description, Key Findings and Notes is also included.

You can find the Maps on our website here:

<http://www.torontolip.com/MapsofRecentImmigrantsinTDSB.aspx>

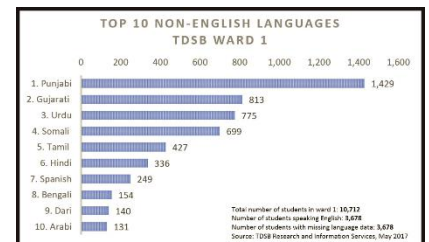


3. Charts

A series of charts illustrating the **Non-English Languages Spoken by Students at TDSB Schools**. Charts show the total number of all school and also the Top 10 languages for each TDSB School Ward.

You can find the Charts on our website here:

<http://www.torontolip.com/TDSBLanguageData.aspx>



To find all our resources go to:

www.torontolip.com> Publications> Resources> Toronto South LIP Resources

Questions? Comments? Feedback? Contact Sandra Guerra at sguerra@woodgreen.org